

Real-Time Tools ActiveX Control

Product Goals

This package is bundled as a group of separate real-time controls. These controls provide the most flexible set of real-time display functions available. Each control has a unique data display and property page interface. Place an instance of a scrolling graph, bar graph, meter directly into your application, or use our PID control to add PID algorithm capability to your program.

All of the properties of a real-time control can be edited via methods or by property pages. This includes axes scaling, precision and labeling, graph position and size, colors, line styles and font attributes.

Available Controls:

Scrolling Graph

Scrolling and sweep graphs display analog data in the same fashion as an oscilloscope or strip chart recorder. The scrolling control includes line, bar, sweep, XY and stacked line graphs. The orientation of the graph can be either horizontal or vertical. A single scrolling graph can display up to 32 channels of data.

Dynamic Bar Graph

Dynamic bar graphs are modeled on process control style face plates. In addition to dynamic bars, alarm limits are displayed, along with current values and alarm status. Up to 8 channels of data can be displayed in a single bar graph. Dynamic bar graphs can be horizontal or vertical.

Meter

Meters display analog data in an analog format. Three meter types are supported: arc, pie and needle meters. The meter arc starting and ending locations, radius, range, colors and alarm limits are all programmable, allowing you to simulate a wide variety of meter and gauge types.

PID

This control includes the Quinn-Curtis PID algorithm with anti-reset windup, output limit and rate clamping features. The control also includes an optional PID bar graph.

Annunciator

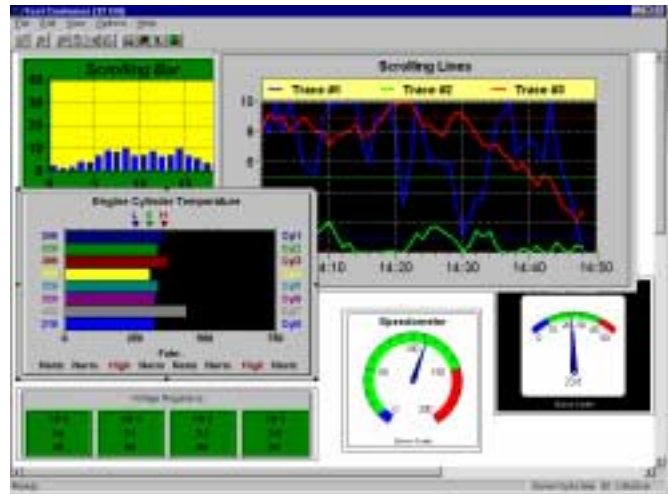
Annunciators panels are used to display the current values and alarm states of real-time data in text form. An annunciator can display from 1 to 32 channels of data.

Buttons

Single (on/off, momentary) and group buttons (radio button logic).

Integrated Printer Support

Output to any Windows supported printer at the resolution of the device.



Serialization

Serialization is designed into every object in the control. Any chart can be serialized regardless of its complexity. A single call to the control will save or restore all of the defining attributes for all of the charts and legends.

Other Features

- On-line Help.
- Save graph image as a DIB or copy to clipboard.
- Refresh data without redrawing entire graph.
- Legends.

Each control includes a comprehensive manual documenting all available member functions. On-line help and example programs are also included. Demo programs for the controls can be downloaded from our web site.

Ordering Information

Product	Part #	Price
Control	WIN-AXC-200	\$150

Shipping Charges

UPS Ground	UPS Blue	UPS Red	DHL	Canada
9	15	26	38	12

SEND ORDERS AND INQUIRIES TO:

QUINN-CURTIS, INC.

18 HEARTHSTONE DRIVE

MEDFIELD, MASSACHUSETTS 02052 USA

PHONE 508\359-6639 FAX 508\359-4123

Common Control Properties

These properties are common to the annunciator, bar, meter PID, and scroll controls:

WindowBackgroundColor
WindowBorderColor
PlotBackgroundColor
WindowBorderStyle
TopPlotArea
RightPlotArea
LeftPlotArea
WindowResizeMode
WindowBorderThickness
BottomPlotArea
TitleString
TitleFont
TitleColor
TitleFontStyle
TitleFontSize
BorderStyle
BorderColor
BorderThickness

Annunciator Properties

AnnunAlarmBackgroundColor
AnnunTextSize
AnnunFontStyle
AnnunFont
AnnunAlarmStatusEnable
AnnunCurrentValueEnable
AnnunTagEnable
AnnunUnitsEnable
AnnunCellColumns
AnnunCellRows
AnnunCellPrecision
AnnunHighAlarmString
AnnunHighAlarmValue
AnnunLowAlarmString
AnnunNormalAlarmString
AnnunCellStyle
AnnunLowAlarmValue
AnnunUnitsString
AnnunCellTagName
AnnunCellTextColor
AnnunCellBackgroundColor

Bargraph Properties

BarType
BarLabelsSize
BarLabelsFontStyle
BarDynTextPrecision
BarLabelsPrecision
BarNumChannels
BarScaleMax
BarScaleMin
BarDynTextEnable
BarScaleCenter
BarUnitsString
BarLabelsFont
BarLowAlarmColor
BarNormalAlarmColor
BarHighAlarmColor
BarHighAlarmString
BarHighAlarmValue
BarLowAlarmString

BarLowAlarmValue
BarLabelsColor
BarAlarmMessageEnable
BarAlarmMarksEnable
BarNormalAlarmString
BarSetpointValue
BarAutoPosition
BarInitialValue
UpdateData
UpdateDataValue
UpdateBargraph
BarChannelColor
BarChannelTagName

Meter Properties

MeterType
MeterNeedleStyle
MeterDynTextEnable
MeterArcEnable
MeterCenterX
MeterCenterY
MeterDynTextPrecision
MeterDiameter
MeterNumChannels
MeterStartArc
MeterStopArc
MeterLowAlarmColor
MeterHighAlarmColor
MeterAlarmArcsEnable
MeterAlarmArcThickness
MeterHighAlarmStart
MeterHighAlarmStop
MeterLowAlarmStart
MeterLowAlarmStop
MeterTickPosition
MeterTickLabelsPosition
MeterTickLabelsColor
MeterTickLabelsSize
MeterTickLabelsFontStyle
MeterTickLabelsFont
MeterLineColor
MeterUnitsString
MeterUnitsStringEnable
MeterLineThickness
MeterMinorTicks
MeterScaleMin
MeterScaleMax
MeterTickLabelsPrecision
MeterTickRelLength
MeterTickStep
MeterNormalAlarmColor
MeterValueArcThickness
MeterScaleCenter
MeterInitialValue
UpdateData
UpdateDataValue
UpdateMeter
MeterChannelColor
MeterChannelTagName

PID Properties

BarAutoPosition
PIDDerivGain
PIDFilterConstant
PIDInputHighValue

PIDInputLowValue
PIDIntegralGain
PIDOutputHighClamp
PIDOutputHighValue
PIDOutputLowClamp
PIDOutputLowValue
PIDOutputRateClamp
PIDOutputSteadyState
PIDSamplePeriod
PIDSetpoint
PIDPropGain
PIDInvertedOutput
PIDLabelsFont
PIDLabelsSize
PIDLabelsFontStyle
PIDAutoString
PIDManualString
PIDNormalString
PIDInputCenterValue
PIDInputPrecision
PIDOutputCenterValue
PIDOutputPrecision
PIDInputUnits
PIDLabelsColor
PIDOutputUnits
PIDBargraphEnable
PIDManualOutputValue
PIDNormalAlarmColor
PIDLowAlarmColor
PIDHighAlarmColor
PIDAlarmMessageEnable
PIDHighAlarmString
PIDHighAlarmValue
PIDLowAlarmString
PIDLowAlarmValue
PIDNormalAlarmString
PIDInputValue
PIDOutputValue
CalcPID
UpdatePIDBargraph
PIDChannelColor
PIDTagName
PIDChannelInitialValue

Scroll Properties

ScrollStepMode
ScrollSweepLineColor
ScrollRelReset
ScrollRelSize
ScrollSampleInterval
ScrollXYNumPoints
ScrollDirection
ScrollBarWidth
ScrollLineColor
ScrollLineStyle
ScrollLineThickness
ScrollTagName
ScrollNormalAlarmColor
ScrollLowAlarmColor
ScrollHighAlarmColor
ScrollLowLowAlarmColor
ScrollHighHighAlarmColor
ScrollHighHighAlarmEnable
ScrollLowAlarmEnable

ScrollLowLowAlarmEnable
ScrollAlarmMarksEnable
ScrollSetpointEnable
ScrollHighHighAlarmValue
ScrollHighAlarmValue
ScrollLowLowAlarmValue
ScrollLowAlarmValue
ScrollSetpointValue
AxisLabelTimeBase
AxisLabelAutoUpdate
AxisLabelStartHour
AxisLabelStartMin
AxisLabelStartSec

Button Control Properties

ControlButtonStyle
ControlButtonLook
ControlButtonString
ControlButtonLeftText
ControlOffColor
ControlDefaultOn
SetButtonState
ChangeControlColor
ControlInitialPosition
ControlMaximum
ControlMinimum
ControlPageStep
ControlSingleStep
ControlButtonString
ControlButtonLeftText
ControlNumButtons
ControlButtonHorizontal
ChangeButtonState
ChangeButtonColor

Printing Properties

PrintStyle
PrintBorder
PrintMaintainAspectRatio
PrintPlotBackground
PrintGraphBackground
PrintLeft
PrintBottom
PrintRight
PrintTop

Legend Properties

SLegendType
SLegendTop
SLegendBottom
SLegendLeft
SLegendRight
SLegendBackgroundColor
SLegendBorderColor
SLegendBorderThickness
SLegendFont
SLegendFontStyle
SLegendFontColor
SLegendOrientation
SLegendEnable
SLegendStrings
SLegendFontSize