

Charting Tools ActiveX Control

Product Goals

The Quinn-Curtis ActiveX Controls encapsulate the robust features of our **Charting Tools** library into an easy-to-use ActiveX Control. Hundreds of properties and graph attributes can be edited through detailed property pages or set and retrieved programmatically using various visual programming languages, allowing you to rapidly create and import charts into your spreadsheet, word processor, database, or other visual container that supports ActiveX Controls. This control makes the power and flexibility of the Quinn-Curtis **Charting Tools** available to programmers who want to write programs using ActiveX controls instead of libraries.

Data Arrays

All data to controls are passed using 32-bit pointers. The theoretical upper limit for a single data array is 4 billion bytes, or 500 million 8-byte doubles. Data can be imported or exported from clipboard, program, or data file.

A single set of data can have an unlimited number of data points. Each set of data displayed in a graph can have a unique number of data points.

Data Display Objects

The data display objects include line, scatter, bar, floating bar, pie, stacked, group, high-low-close, area fill, and error bars. Any combination of data display objects can be added to a chart.

Multiple Axes and Axes Scales

Each chart offers two pairs of x and y axes allowing two separate scaling transformations. Two completely different scaling ranges for each x,y pair can be displayed together. Linear and logarithmic axes are supported. Axes are drawn in either automatic or manual axis scaling modes, and can be labeled using engineering or scientific formats, or with user defined string labels.

Built-in Data Grid Editor

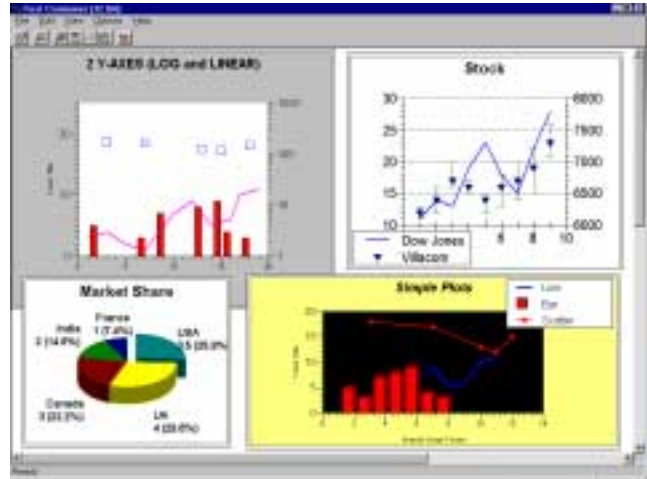
The data property page includes a data grid editor. Modify data values via data table editor or create new arrays by entering values into the appropriate cells. Arrays can be resized arrays to any dimension. Charts are automatically updated to reflect the modified data set values.

Serialization

Serialization has been designed into every object in the control. Any chart can be serialized regardless of its complexity. A single call to the control will save or restore all of the defining attributes and data for all of the charts and legends.

Integrated Printer Support

Output to any Windows supported printer at the resolution of the device.



Numerical Processing

Our FFT algorithms are available as methods in the control.

Other Features

- On-line Help.
- Integrated zooming and drill down.
- Save graph image as a DIB or copy to clipboard.
- Refresh data without redrawing entire graph.
- Bad Data Point Handling.
- Legends.

Each control includes a comprehensive manual documenting all available member functions. On-line help and example programs are also included. Demo programs for the controls can be downloaded from our web site.

Ordering Information

| Product | Part # | Price |
|---------|-------------|-------|
| Control | WIN-AXC-100 | \$100 |

Shipping Charges

| | | | | |
|--------------------|-------------------|------------------|-----------|--------------|
| UPS Ground 9 | UPS Blue 15 | UPS Red 26 | DHL 38 | Canada 12 |
|--------------------|-------------------|------------------|-----------|--------------|

SEND ORDERS AND INQUIRIES TO:

QUINN-CURTIS, Inc.

18 HEARTHSTONE DRIVE

MEDFIELD, MASSACHUSETTS 02052 USA

PHONE 508/359-6639 FAX 508/359-4123

Axis Properties

AxisMin
 AxisMax
 ScaleEnable
 AxisEnable
 AxisInterceptTrack
 AxisLabelsEnable
 AxisScaleMode
 AxisIntercept
 AxisColor
 AxisLineWidth
 AxisMinorTicks
 AxisMajorTickInterval
 AxisTickStyle
 AxisLabelPos
 AxisLabelDecs
 AxisLabelColor
 AxisLabelFont
 AxisLabelFontStyle
 AxisLabelFontSize
 AxisNumericStyle
 AxisTitleString
 AxisTitleFont
 AxisLabelStrings
 NumAxisLabelStrings
 AxisLabelStringsEnable
 AxisLabelStringsStart
 AxisTitleColor
 AxisTitleFontStyle
 AxisTitleFontSize
 AxisTitlePos
 AxisGridEnable
 AxisGridColor
 AxisGridLineWidth
 AxisGridLineStyle
 AxisGridType
 AxisAutoAxis
 AxisLabelCurrentAxis
 CurrentAxis

Data Set Properties

SetDataCursor
 MoveDataCursor
 SortDataX
 SortDataY
 GetDatasetMinX
 GetDatasetMaxX
 GetDatasetMinY
 GetDatasetMaxY
 MarkDataPoint
 SavePageMeta
 XDataValues
 YDataValues
 GPlotBarWidth
 SDataXData
 GetSDataYData

Data Set Methods

ReconnectDataSet
 DefineDataSet
 DefineGroupDataSet
 GetNearestPoint
 LoadASCIIDataSet
 SaveASCIIDataSet

Data Set Properties

SDataNumPlotPoints
 SDataName
 SDataEnable
 SDataType
 SDataNumGroups

Simple Plot Properties

SPlotType
 SPlotRefAxes
 SPlotLineColor
 SPlotLineThickness
 SPlotAreaFill
 SPlotBarType
 SPlotBarColor
 SPlotBarJustify
 SPlotBarHatch
 SPlotBarWidth
 SPlotScatterColor
 SPlotScatterShape
 SPlotScatterSize
 SPlotScatterDrop
 SPlotScatterLine
 SPlotLineStyle

Group Plot Properties

GPlotType
 GPlotDataset
 GPlotRefAxes
 GPlotAreaFill
 GPlotBarType
 GPlotLineColor
 GPlotLineStyle
 GPlotLineThickness
 GPlotBarHatch
 GPlotBarJustify

Scatter Plot Properties

SPlotScatterStyle
 SPlotSpline
 GPlotScatterStyle
 GPlotScatterSize
 GPlotScatterShape

Pie Chart Properties

PieNumericStyle
 Pie3DLook
 PieCenterX
 PieCenterY
 PieDiameter
 PieSliceFillColor
 PieSliceHatch
 PieSliceBorderColor
 PieSliceExplode
 PieSliceLabel
 PieNumericFont
 PieFontStyle
 PieFontSize
 PieFontColor

Chart Properties

PlotBackgroundColor
 LeftPlotArea
 RightPlotArea
 MajorTickSize
 MinorTickSize
 BottomPlotArea
 TopPlotArea
 WindowBorderColor
 WindowBackgroundColor
 WindowBorderStyle
 WindowBorderThickness
 CurrentPlot
 UpdateGraph

Zoom & Data Cursor Properties

EventZoom
 EventShowPropPage
 EventRetrieveDataValue
 EventDataCursorType
 EventZoomY
 EventZoomXRoundMode
 EventZoomYRoundMode
 EventZoomX
 EventZoomReset
 EventZoomResetMinX
 EventZoomResetMinY
 EventZoomResetMaxX
 EventZoomResetMaxY

Title Properties

TitleString
 TitleFont
 TitleColor
 TitleFontStyle
 TitleFontSize
 TitlePos

Printing Properties

PrintStyle
 PrintBorder
 PrintMaintainAspectRatio
 PrintPlotBackground
 PrintGraphBackground
 PrintLeft
 PrintBottom
 PrintRight
 PrintTop

Legend Properties

SLegendType
 SLegendTop
 SLegendBottom
 SLegendLeft
 SLegendRight
 SLegendBackgroundColor
 SLegendBorderColor
 SLegendBorderThickness
 SLegendFont
 SLegendFontStyle
 SLegendFontColor
 SLegendOrientation
 SLegendEnable
 SLegendStrings
 SLegendFontSize

FFT Methods

FFTDSPWindow
 FFTComplexFFT
 FFTRealFFT
 FFTPowerSpectrum
 FFTMagnitude
 FFTPhase
 FFTFrequency